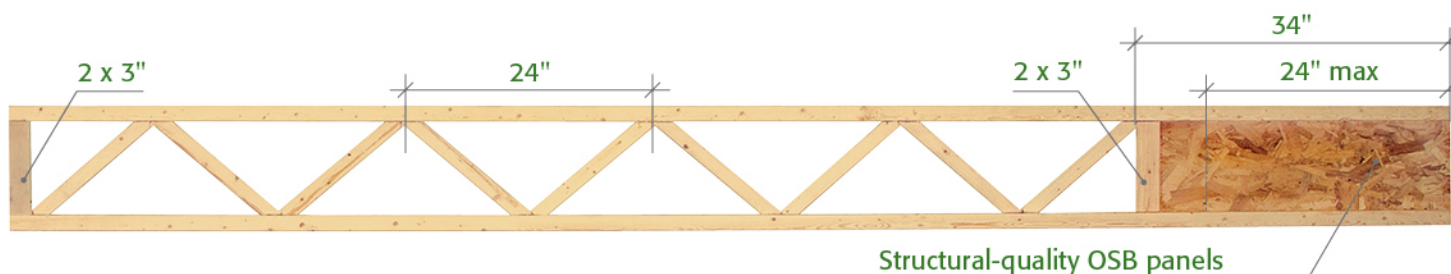




# TRIFORCE® Open Joist Floor System



## A Revolutionary Product

Enjoy peace of mind underfoot with Barrette Structural's high-performance floor system. The TRIFORCE® open joist is a revolutionary product that uses the strength of triangulation and multiple high-precision finger joints to create an efficient, solid and versatile open joist floor system.

## Versatile and Easy to Install

The TRIFORCE® Open Joist Floor System simplifies the task of builders because it is designed for unhampered and damage-free passage of mechanical ductwork, plumbing, wires and other components. Thanks to its structural-quality OSB panel, TRIFORCE® open joists can be adjusted quickly and easily, directly on the jobsite, which in turn streamlines installation. The TRIFORCE® Open Joist Floor System is a rugged, durable solution suitable for all types of construction projects.



Peace of mind underfoot™

### The strength of triangulation

A floor system that's as solid as it is practical, designed to integrate ductwork, plumbing, wires and other components.



### TRIFORCE® open joists – Web openings

Height	Round	Square	Rectangular
11 7/8"	7 1/4"	5 3/4" x 5 3/4"	3" x 13"
14"	8 1/2"	6 1/2" x 6 1/2"	3" x 14", 6" x 8"
16"	9 1/2"	7 1/2" x 7 1/2"	3" x 15"

[www.openjoisttriforce.com](http://www.openjoisttriforce.com)

05/2017

Find out more at **1-800-567-8644** or **barrettestructural.com**