

A photograph of two men wearing white hard hats and safety vests, looking at a set of blueprints on a construction site. The man on the left is wearing a red vest over a grey sweater, and the man on the right is wearing a dark vest over a blue shirt. The background shows the wooden framing of a building under construction.

## The Leader in Wood Framing

**50 Years** of Expertise.

**700 Dedicated** Employees.

**5 State-of-the-Art** Plants.

Barrette Structural fabricates superior-quality roof trusses and prefabricated walls as well as a high-performance open joist floor systems. But Barrette Structural delivers more than just outstanding products: it also provides personalized service every step of the way thanks to a dedicated team that's closely attuned to your needs.

**Superior-Quality** Service.

**A Team** That Makes All the Difference.

Every Barrette Structural product comes with support and advice, as well as the technical, logistical, delivery and after-sale services that have made its reputation. Our teams are at your side in order to assist you at every stage of your project and ensure total peace of mind.



Find out more at **1-800-567-8644** or **barrettestructural.com**



## Roof Trusses

### Solid Value, Adapted to Your Projects

Prefabricated wood roof trusses are currently the most widely used roofing component, and with good reason. Whether you're constructing a commercial, industrial, agricultural or residential building, Barrette Structural roof trusses are the ideal solution for each of these projects.

Available in a wide variety of configurations to meet your specific construction needs, every Barrette Structural roof truss has a high strength-to-weight ratio to expand your interior design options.

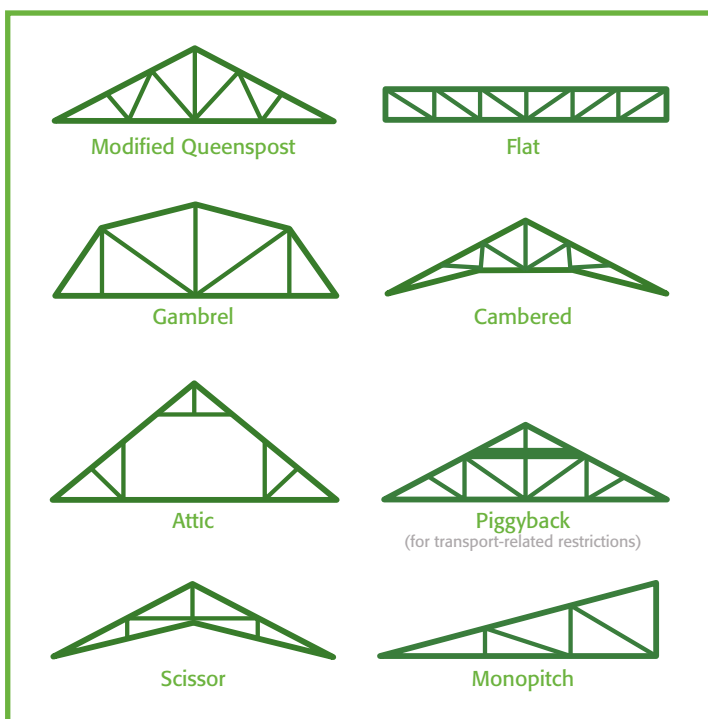
### Save Without Sacrificing Quality

Barrette Structural roof trusses are fabricated using state-of-the-art technology, including drafting software, laser modeling and digital saws, to ensure dead-on accuracy and full compliance with all engineering details.

Our roof trusses are delivered directly to your jobsite according to your exact specifications. Moreover, each truss is identified separately and comes with detailed assembly instructions, making installation faster and easier and significantly reducing manpower costs while meeting the various requirements of the National Building Code of Canada.

### A Wide Variety of Configurations

Whatever your building design, we have a roof truss that's suited to your project.







## Prefabricated Walls

### Custom-Made Wall Panels

Your project is more than just a building—it's an investment and the culmination of many hours of hard work. Choose Barrette Structural prefabricated walls for custom-made wall panels that are perfectly tailored to your project.

Thanks to the use of high-performance digital tools and state-of-the-art manufacturing equipment, your prefabricated walls are designed and built with unequalled precision, regardless of their specifications or requirements.

### Efficient and Economical

These superior-quality prefabricated walls are delivered right to your jobsite and are ready to be installed according to your building plan.

Our high-precision fabrication methods eliminate the need for field adjustments, saving you both time and money. Barrette Structural prefabricated walls are practical, efficient and economical solutions that are ideal for builders looking to improve jobsite productivity and quality.

A variety of options are available to achieve enhanced price–quality ratios and excellent energy efficiency.

### Residential

#### Energy Efficient – Ultra

Air barrier + Insulated panel + R22 wool insulation + Reflective vapour barrier	R-Value <b>R 30.8</b>
Natural interior cardboard fibre soundproofing	R-Value <b>R 32.1</b>

#### Energy Efficient – Plus

Air barrier + Insulated panel + R20 wool insulation + Reflective vapour barrier	R-value <b>R 27.9</b>
Natural interior cardboard fibre soundproofing	R-value <b>R 29.2</b>

#### Energy Efficient

Air barrier + Insulated panel + R20 wool insulation + 0.15 mm clear vapour barrier	R-value <b>R 26.4</b>
Natural interior cardboard fibre soundproofing	R-value <b>R 27.7</b>

### Commercial

#### Energetic Performance

Air barrier + OSB + R20 wool insulation + 0.15 mm clear vapour barrier	R-value <b>R 23.1</b>	Natural interior cardboard fibre soundproofing	R-value <b>R 24.4</b>
--	--------------------------	--	--------------------------

### Multi-residential

#### Energy Efficient – Ultra

Air barrier + Expanded polystyrene + OSB + R22 wool insulation + Reflective vapour barrier	R-value <b>R 31.7</b>
Natural interior cardboard fibre soundproofing	R-value <b>R 33</b>

#### Energy Efficient – Plus

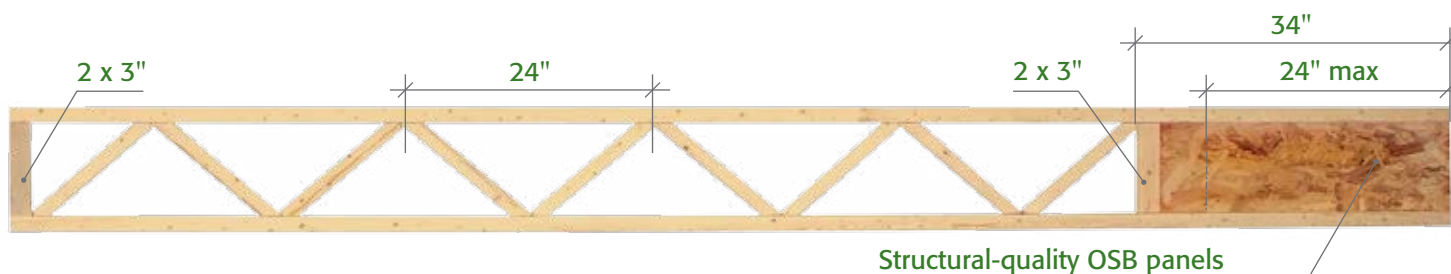
Air barrier + Expanded polystyrene + OSB + R20 wool insulation + Reflective vapour barrier	R-value <b>R 28.8</b>
Natural interior cardboard fibre soundproofing	R-value <b>R 30.1</b>

#### Energy Efficient

Air barrier + Expanded polystyrene + OSB + R20 wool insulation + 0.15 mm clear vapour barrier	R-value <b>R 27.3</b>
Natural interior cardboard fibre soundproofing	R-value <b>R 28.6</b>



# TRIFORCE® Open Joist Floor System



## A Revolutionary Product

Enjoy peace of mind underfoot with Barrette Structural's high-performance floor system. The TRIFORCE® open joist is a revolutionary product that uses the strength of triangulation and multiple high-precision finger joints to create an efficient, solid and versatile open joist floor system.

## Versatile and Easy to Install

The TRIFORCE® Open Joist Floor System simplifies the task of builders because it is designed for unhampered and damage-free passage of mechanical ductwork, plumbing, wires and other components. Thanks to its structural-quality OSB panel, TRIFORCE® open joists can be adjusted quickly and easily, directly on the jobsite, which in turn streamlines installation. The TRIFORCE® Open Joist Floor System is a rugged, durable solution suitable for all types of construction projects.



Peace of mind underfoot™

### The strength of triangulation

A floor system that's as solid as it is practical, designed to integrate ductwork, plumbing, wires and other components.



### TRIFORCE® open joists – Web openings

Height	Round	Square	Rectangular
11 7/8"	7 1/4"	5 3/4" x 5 3/4"	3" x 13"
14"	8 1/2"	6 1/2" x 6 1/2"	3" x 14", 6" x 8"
16"	9 1/2"	7 1/2" x 7 1/2"	3" x 15"

[www.openjoisttriforce.com](http://www.openjoisttriforce.com)







Find out more at **1-800-567-8644** or **barrettestructural.com**





## Before, During and After: **A Team at Your Service.**

With the Barrette Structural team, your project is in good hands. **The Six Steps to Unparalleled Service.**

 <h3>Plan</h3>	<ul style="list-style-type: none"> <li>✓ Receipt of the plan</li> </ul>	<ul style="list-style-type: none"> <li>✓ Plan review and optimization</li> </ul>
 <h3>Estimation</h3>	<ul style="list-style-type: none"> <li>✓ Cost estimates and complete list of materials</li> </ul>	<ul style="list-style-type: none"> <li>✓ Customer approval</li> </ul>
 <h3>Drawings</h3>	<ul style="list-style-type: none"> <li>✓ Technical design and final drawings</li> </ul>	<ul style="list-style-type: none"> <li>✓ Validation by our Engineering Department</li> </ul>
 <h3>Fabrication</h3>	<ul style="list-style-type: none"> <li>✓ Cutting and fabrication of components</li> </ul>	<ul style="list-style-type: none"> <li>✓ Assembly and preparation of the order</li> </ul>
 <h3>Delivery</h3>	<ul style="list-style-type: none"> <li>✓ Planning and organization</li> </ul>	<ul style="list-style-type: none"> <li>✓ Deliveries made according to customer requirements</li> </ul>
 <h3>Services</h3>	<ul style="list-style-type: none"> <li>✓ After-sale service</li> </ul>	<ul style="list-style-type: none"> <li>✓ Technical support</li> </ul>