



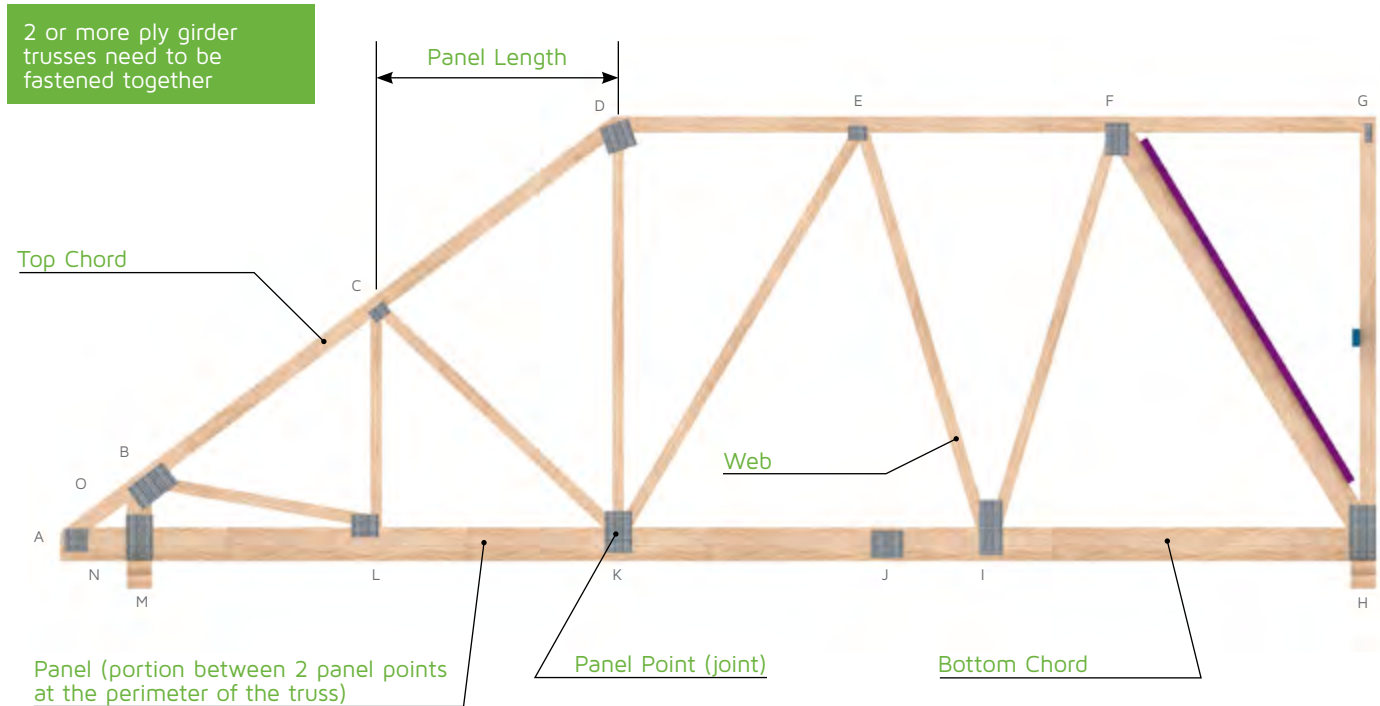
Assembly Guide

Multi-Ply Girder Truss



Assembly of multi-ply girder truss

Girder trusses are designed to carry other roof trusses or other structural elements. Girder trusses may consist of 2 to 5 identical trusses fastened together (with nails/bolts) to act as one unit to support the loads. Along with nailing, girder trusses of four or more plies need to be bolted together.



Required Assembly

Number of rows and distance between nails

Nail size and Length

Along with nailing, a 1/2" dia bolt is required at mid point of each panel on a 4 or 5 plies girder

Panel Point or Joint

LE CALCUL CONSISTE EN 4 FERMES FABRIQUEES SEPAREMENT ET ATTACHEES ENSEMBLE COMME SUIV:

MEMBRE #	RANGEE	ESPACEMENT EN SURFACE (PO)	CHARGE (PLF)
A- D	1	12	HAUT
D- G	1	12	HAUT
G- H	1	12	HAUT
MEM. SUP.: CLOUS SPIRALS (0.122"X3")			
A- J	4	4	COTE(1200.5)
J- H	4	4	COTE(1200.5)
MEM. INF.: CLOUS SPIRALS (0.122"X3")			
2x3	1	6	
2x6	2	6	

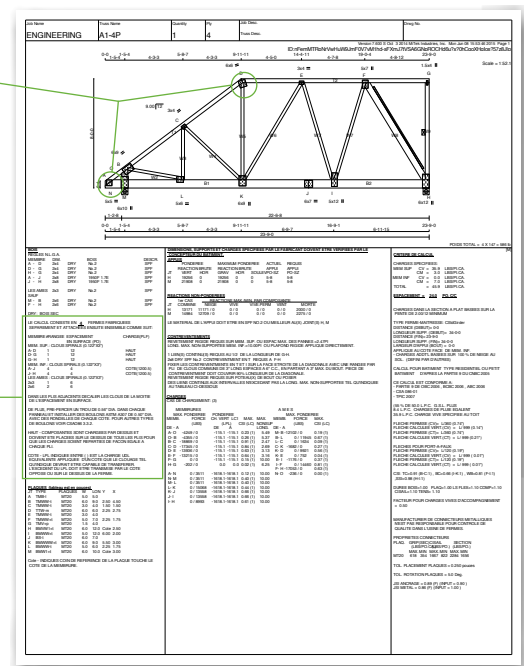
LES AMES : CLOUS SPIRALS (0.122"X3")

DANS LES PLS ADJACENTS DECALER LES CLOUS DE LA MOITIE DE L'ESPACEMENT EN SURFACE.

DE PLUS, PRE-PERCRER UN TROU DE 0.56" DIA. DANS CHAQUE PANNEAU ET INSTALLER DES BOULONS ASTM A307 DE 0.50" DIA AVEC DES RONDELLES DE CHAQUE COTE. POUR AUTRES TYPES DE BOULONS VOIR CSA086 3.3.2.

HAUT - COMPOSANTES SONT CHARGES PAR DESSUS ET DOIVENT ETE PLACEES SUR LE DESSUS DE TOUS LES PLS POUR QUE LES CHARGES SOIENT REPARTIES DE FACON EGALE A CHAQUE PLI.

COTE - LPL INDIQUEE ENTRE () EST LA CHARGE UDL EQUIVALENTE APPLIQUEE D'UN COTE QUE LE CLOUAGE TEL QU'INDIQUE DEVRAIT ETE CAPABLE DE TRANSFERER. L'EXCEDENT DU LPL DOIT ETRE TRANSMISE PAR LE COTE OPPOSE OU SUR LE DESSUS DE LA FERME.



Fasteners

Nails

Multiple rows are possible. Refer to "Engineering Report and Truss Drawing Interpretation Guide" for more information. Nails of 0.122 x 3", as per CSA B111.

Nail Rows

1 Row



2 Rows



3 Rows



4 Rows



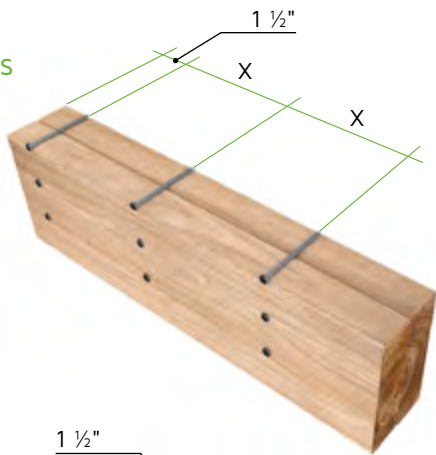
5 Rows or more



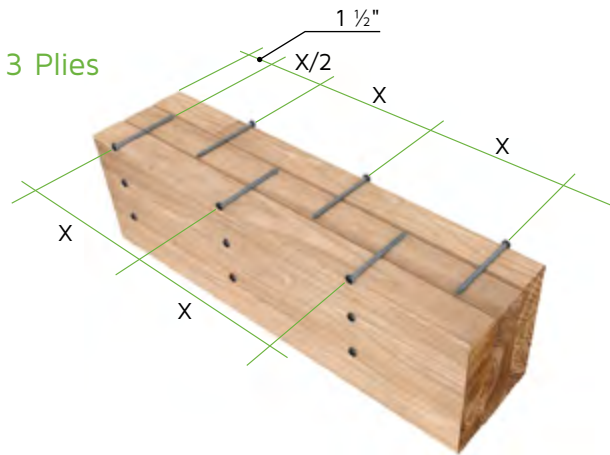
Nailing Pattern

x = nail spacing

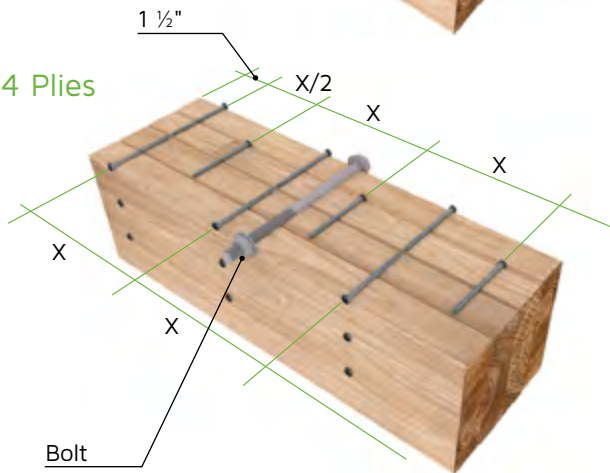
2 Plies



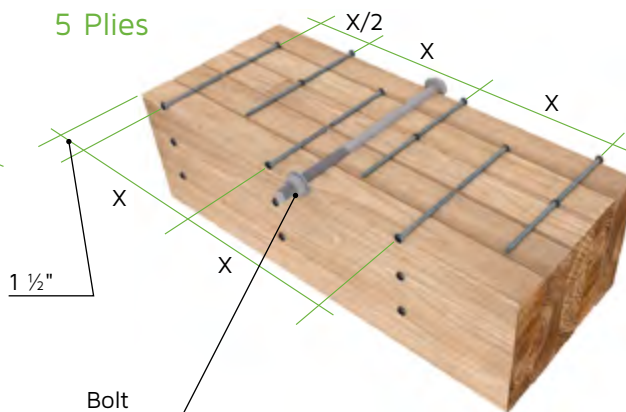
3 Plies



4 Plies

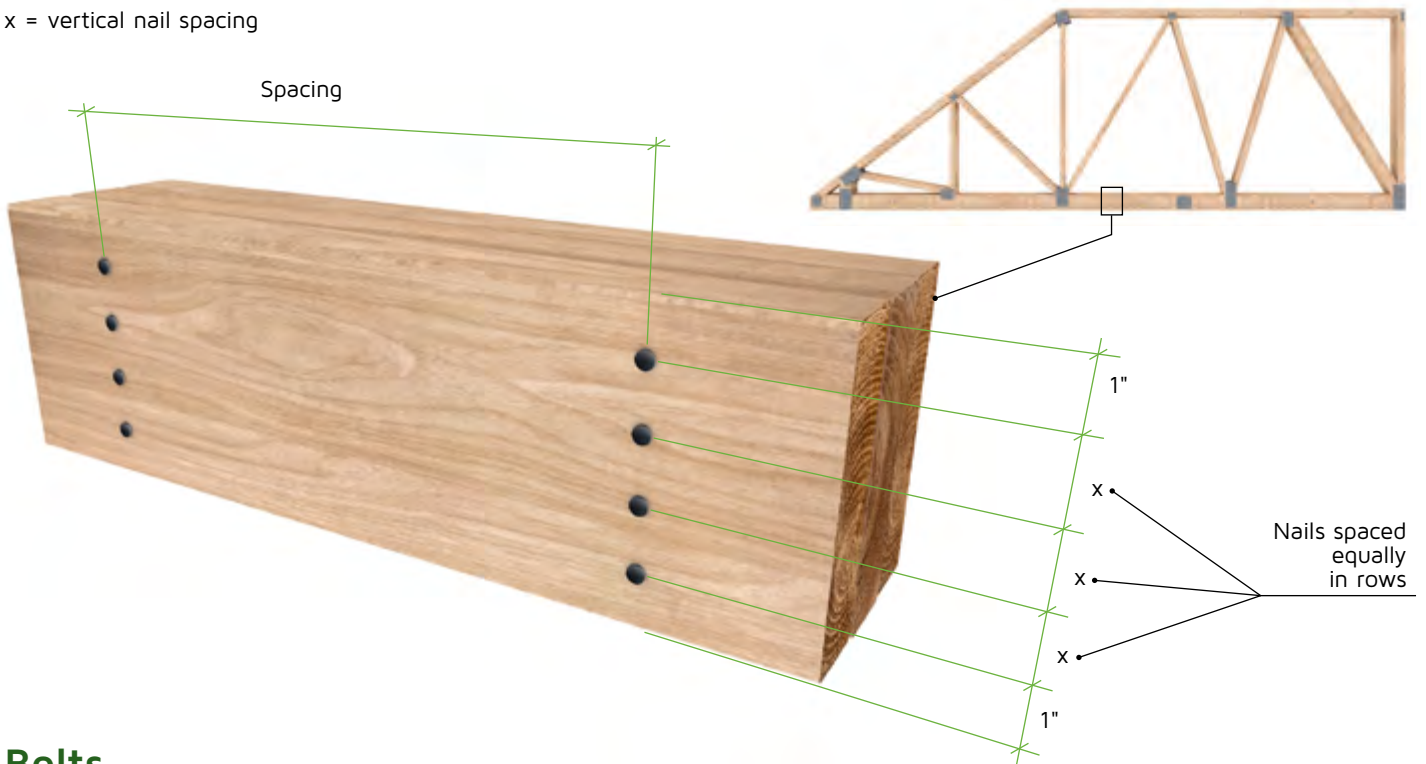


5 Plies



Vertical Spacing of Nail Rows

x = vertical nail spacing



Bolts

Girder trusses which consist of four or five plies need to be bolted together with a ½" diameter bolts (A307) at the midpoint of each panel.

What is a Panel ?

A panel is located between panel points (joints) of top and bottom chord elements.



Barrette Structural

Barrette Structural manufactures and distributes roof trusses, prefabricated walls and Open Concept Floor System for thousands of construction projects, whether they are residential, multi-residential, institutional, commercial or agricultural.

With nearly 700 dedicated employees, including 120 technicians and 40 technical advisors, Barrette Structural offers expertise, production capacity and quality of wood frame and engineered wood products unique in Quebec and Ontario.

Unparalleled Service

More than just products, the seasoned team at Barrette Structural's mission is to assist you in each phase of your construction projects and provide you with unparalleled service.

